

1) On each map draw and color code the

Equator =

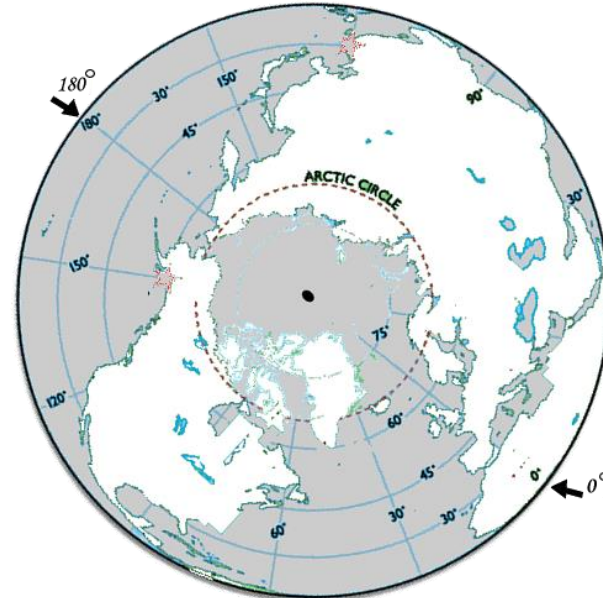
Prime Meridian =

and International Date Line. =



Outline S.H.

Color E.H.

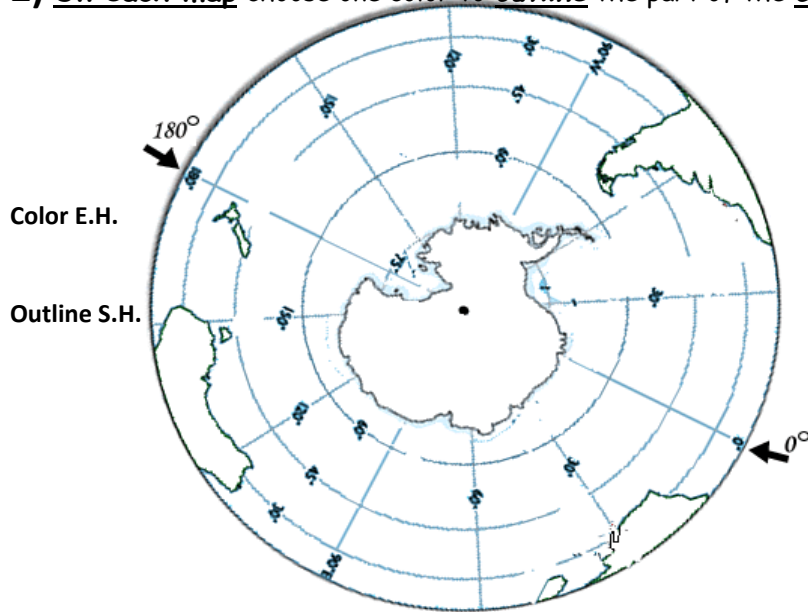


Outline S.H.

Color E.H.

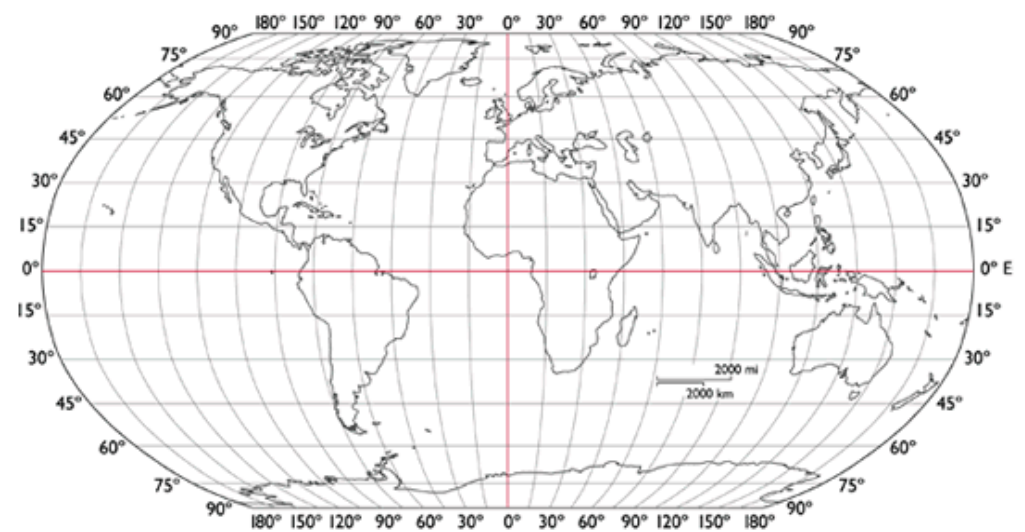
2) On each map choose one color to outline the part of the continents that are in the Southern Hemisphere.

Southern Hemisphere =



Color E.H.

Outline S.H.

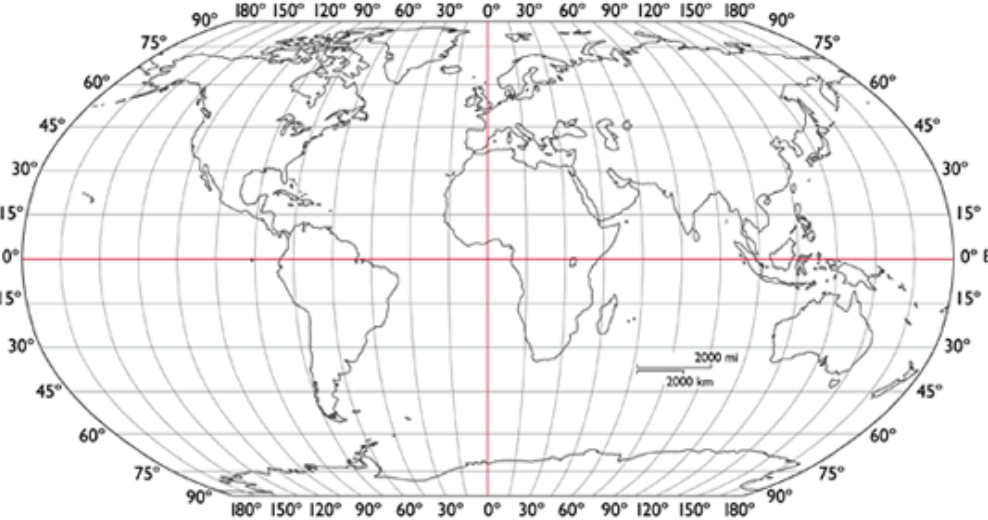


Outline the S.H. / Color the E.H.

3) Now choose a new color to color the part of the continents that are in the Eastern Hemisphere for each map.

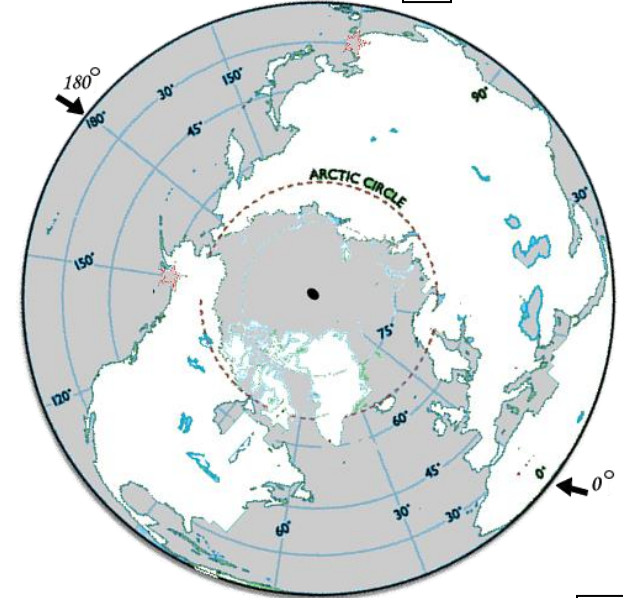
Eastern Hemisphere =

1) On each map draw and color code the Equator = Prime Meridian = and International Date Line. =



Outline N.H.

Color W.H.



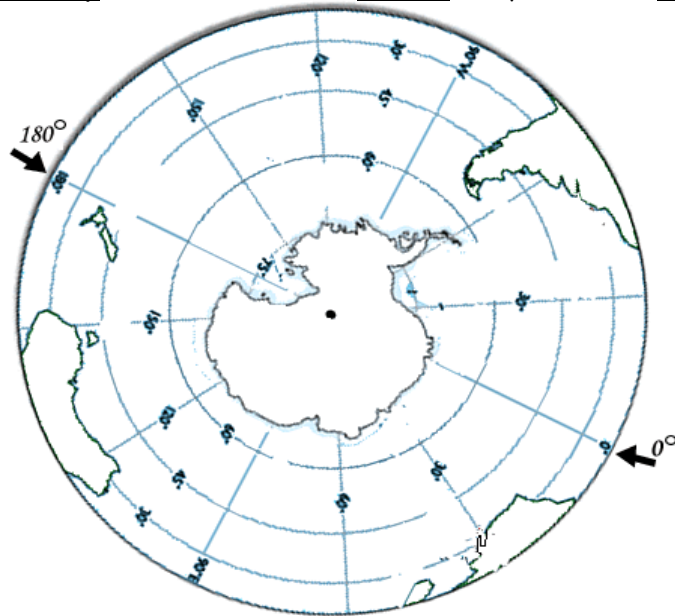
Outline N.H. Color W.H.

2) On each map choose one color to outline the part of the continents that are in the Northern Hemisphere.

Northern Hemisphere =

Outline N.H.

Color W.H.



Outline N.H.

Color W.H.



3) Now choose a new color to color the part of the continents that are in the Western Hemisphere for each map.

Western Hemisphere =